

Rock & Gem

Volume 36, Number 1 January 2006

FEATURES

Gold of Many Colors

Alloys produce new shades and properties
by Steve Voynick

Alaska's First Gold Rush

Juneau struck gold 18 years before the Klondike
by Roger McPherson

Gold Fakes and Frauds

Some people will do anything to get it!
by Bob Jones

Roadside Panning Sites in California

Part X: Where to find gold in five counties
by David and Clois Walker

The Frugal Collector:

Phosphate Minerals

Part II: They're colorful and collectible
by Bob Jones

Rock & Gem Kids

Roselite and a gold maze
by Steve Decker

Fabulous Fire Obsidian

Natural glass with unearthly fire
by James A. Miller

A Better Rock Hammer

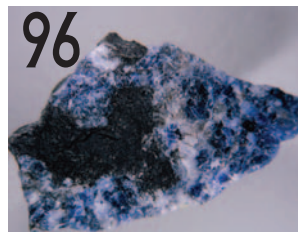
Custom tools for serious rockhounds
by Lance Strong

Chalcedony Agate

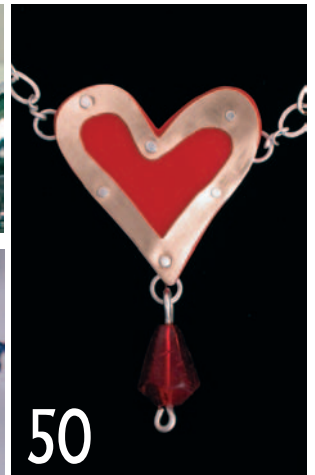
Colors and patterns explain its popularity
by Bill Evans



40



96



50

12

20

28

34

40

48

60

72

80

FIELD TRIP

Princess Sodalite

96

This royal blue stone is your for the taking
by Pat Kerr

PROJECT

Make a Heart of Gold Pendant

50

Incorporate acrylic into your gold jewelry
by Diane Prokop

REGULAR COLUMNS

Craftsman of the Month.....6	Lapidary Lore
Show Dates8	and More76
Shop Talk18	Rock Science.....92
Picks & Pans68	Many Facets94
Off the Dop71	On the Rocks.....104

Miller
Magazines, Inc.

Rock & Gem (ISSN 0048-8453, USPS 486-290) is published monthly by Miller Magazines, Inc., 290 Maple Ct., Ste. 232, Ventura, California 93003-3517, telephone (805) 644-3824. Periodicals postage paid at Ventura, CA 93006, and additional mailing offices. Single-copy price \$3.99. Subscription in U.S.A. and possessions: 1 year (12 issues) for \$24.00; 2 years for \$42.00; 3 years for \$54.00. Add \$15.00 per year postage for Canada and all other foreign countries. Submission of articles and photos by our readers is welcome, but we can accept no responsibility for loss or damage to unsolicited editorial contributions. Copyright 2005 by Miller Magazines, Inc.

Printed in U.S.A.

Notice: On rare occasions, typographical errors occur in prices listed in magazine advertisements. For this reason, advertisements appearing in *Rock & Gem* should be considered as requests to inquire, rather than as unconditional offers to sell. All prices are subject to change without notice.

POSTMASTER: Send address changes to
Rock & Gem,
P.O. Box 469113, Escondido, CA 92046-9113
or RockAndGem@pcspublish.com

ON THE COVER These California gold specimens owned by Kristalle, Laguna Beach, show various types of crystallization, including octahedrons, leafs and wires. (Photo by Harold and Erica Van Pelt)

BOB JONES Senior Consulting Editor; **LYNN VARON** Managing Editor; **MARY ROBERTSON** Art Director; **CARRIE MEADOWS-HARTMANN** Graphic Designer; **JOE HOWARD** Graphic Artist; **DANA GURNEE** Production Assistant; **GAIL BUTLER, STEVE DECKER, WILLIAM A. KAPPELE, ROGER MCPHERSON, JIM PERKINS, DIANE PROKOP, STEVE VOYNICK** Contributing Editors; **BRIAN ROBERTS** Advertising Director; **MARLENA COLLIER-MIGACZ** Classified Advertising Manager; **LEE MARTIN** Advertising Advisor; **CELESTE WEINGARDT** Advertising Production Manager; **DRAY BANKS** Advertising Production; **RAMONA HARVEY** Circulation Manager; **JEFF SHOOP** Publisher

EDITORIAL SUBMISSIONS:
Lynn Varon / *Rock & Gem*
290 Maple Ct., Suite 232, Ventura, CA 93003
(805) 644-3824 ext. 29
e-mail: editor@rockngem.com

ADVERTISING INQUIRIES:
Brian Roberts / *Rock & Gem*
11288 S. Indian Wells Dr., Goodyear, AZ 85338
(623) 327-3525 phone/fax
e-mail: brian@millermags.com